

Number 176

June 2015

A monthly electronic official newsletter of the PRRT&HS published for the purpose of disseminating information on current issues and events pertaining to the Society's and Chapter's operations and administration as well as other information of interest about the PRR.

Editor – Ed Swain

Please send comments and corrections to the Editor at: edwardswain@aol.com

Copyright PRRT&HS – 2015 – All Rights Reserved. May be reproduced for distribution.

Not for sale.

IN THIS ISSUE

- **MEMBERSHIP**
- **MIDWEST TO FLORIDA BOOK STATUS**
- **SOCIETY TRADE SHOW BOOTH**
- **SHOP AT OUR E-STORE**
- **CHAPTER MEETINGS**

MEMBERSHIP

As of June 14, 2015, the PRRT&HS membership for 2015 is as follows:

Regular	2,169
Sustaining	312
Contributing	71
International	27
Keystone	125
Total	2,706

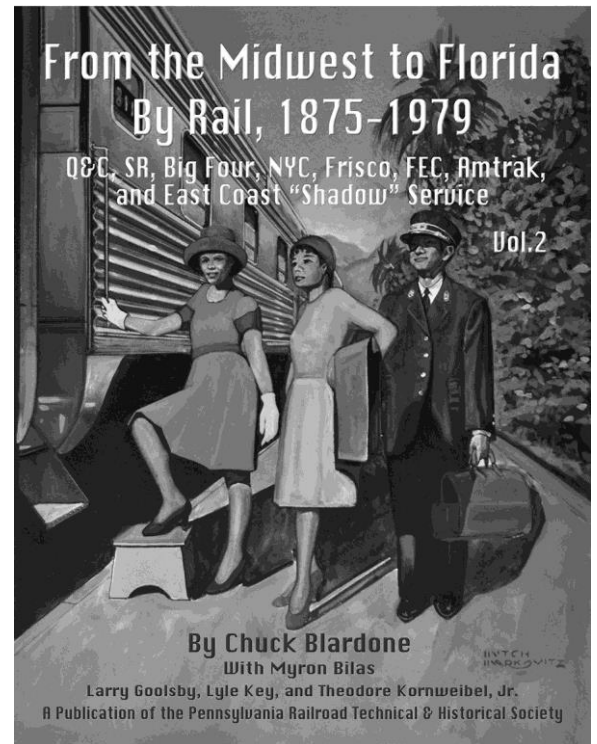
Non-renewals: 266 Renewal Rate: $2,545/2,811=90.5\%$
The number of new members for 2015 is 161.

MIDWEST TO FLORIDA BOOK STATUS

Printing of the Midwest to Florida book was delayed due to technical issues encountered during printing. Chuck Blardone worked with our printer to assure the final product will be to our usual high quality.

The books went to the binder in late May and are now shipping.

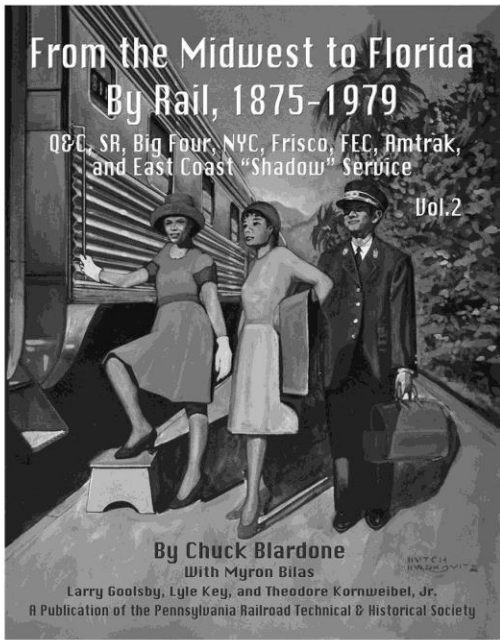
Order yours now using the form below.



New PRRT&HS Book Now Shipping

From the Midwest to Florida by Rail, 1875-1979

Volume 2 of 2



Announcing the second volume of the definitive history of through passenger service from all Midwest cities to Florida. All trains. All years.

Vol. 2 covers Q&C-SR-Big Four-NYC, Frisco, FEC, Amtrak and Midwest-Fla. service via Washington. Bonus sections on "Jim Crow," foldout artwork, stations, system maps, Addenda and Errata for Vol.1. It also contains plans for the cars of PRR's *South Wind*.

486 pages, many in color, all on premium paper. This subject matter is very interrelated; we recommend that the reader purchase both volumes. Vol.1 covers C&EI-IC-PRR-L&N-NC&StL-Monon-M&O CofGa-ACL-SAL. It is 520 pages long.

Vol.2 is sold exclusively by PRRT&HS, for \$80.

SPECIAL OFFER: Purchase both Vol.1 and Vol.2 for \$150, a \$40 saving!

There are two ways to purchase these or any PRRT&HS books: phone or mail. Telephone Kutztown Publishing at 610-683-7341, ask for Connie, and have your credit card ready. Or, fill in and mail the following tear sheet.

Tear off and mail, with payment, to: Kutztown Publishing Co., P.O. Box 326, Kutztown, PA 19530-0326, or order from the PRRT&HS website, www.prrths.com. Checks/M.O. should be made payable to "PRRT&HS."

Book Cost: Vol.2, \$80; Both Vol.1 and 2, \$150 _____
 U.S. Postage: \$8 for one volume, \$13 for two volumes _____
 Overseas Postage: \$60 per book _____
 Pa. Residents must add 6% tax on book & shipping _____
 Total: Check Money Order Credit Card _____

Name, Address _____ PRRT&HS # _____

Credit Card Type _____ No. _____ Exp. _____ Security Code _____

Signature _____

SOCIETY TRADE SHOW BOOTH

HELP IS NEEDED: The NMRA Midwest Region has invited us to participate in their 2015 eduTRAIN Education program conference, September 11 and 12 in South Bend Indiana. They will provide space at no charge and are encouraging us to sell books at the conference. If you are in the area, or know someone who might be able to host this meeting, please let me know as soon as possible at edwardswain@aol.com, or (513) 779-8211.

The following are the current committed dates for the display:

August 8 and 9, St. Louis Prototype Modelers Meeting (Bob Flores)

August 22 and 23, Greenberg show in Chantilly VA (Dave Evans)

September 11 and 12, NMRA eduTRAIN conference South Bend IN (NEED HOST)

October 24, Great Scale Model Train Show Timonium, MD (Jerry Britton)

February 6, 2016, Great Scale Model Train show Timonium, MD (Jerry Britton)

April 9, Great Scale Model Train show Timonium, MD (Jerry Britton)

Contact Ed Swain if you would like to reserve the booth for an event.

SOCIETY ON FACEBOOK

The Society has been on *Facebook* since June 2010, we post interesting tidbits there from time to time. Check it out: <http://www.facebook.com/pages/The-Pennsylvania-Railroad-Technical-Historical-Society/136126329733054>

SOCIETY MEMBERSHIP

The purpose of the Pennsylvania Railroad Technical & Historical Society is to bring together persons interested in the history and modeling of the Pennsylvania Railroad, its subsidiaries and its predecessor companies. Our goals are to promote the preservation and recording of all information regarding the organization, operation, facilities and equipment of the PRR.

The Society's quarterly illustrated journal, *The Keystone*, has been published continuously since 1968. Each issue of 84 or more pages contains illustrated original authoritative articles, about locomotives, cars, other equipment, facilities and operating practices of the PRR. The Society also publishes its own thoroughly researched books and other materials concerning Pennsy history. *The Keystone Modeler* is also a quarterly special 30-plus page online publication of the Society. These publications are for sale on our website.

The Society meets annually, usually during the first weekend in May, providing an opportunity for its members to get together and learn more about the PRR. Local chapters around the country also provide members and guests with regular meetings that feature PRR related programs, see listing below for chapter events. The 2016 Annual National Meeting will take place between May 19 and May 21 at Camp Hill hosted by the New England Chapter. We hope to see you there.

Information about our Society may be found on our website <http://www.prrths.com>. To join the Society you may use the e-Store http://www.prrths.com/estore/index_estore.html#membership or send \$35.00 to: PRRT&HS, PO Box 54, Bryn Mawr, PA 19010-0054. All memberships are for a calendar year, renewals after February 15th are \$40.00. The additional late dues fee pays to ship any Keystones that missed the normal mailing.

Drawings from Microfilm

Copies of PRR equipment drawings are available from the Society's microfilm collection. To order drawings, you must know the drawing number and title. Ordering information and lists of arrangement drawings are available on the Society's website, www.prrths.com, under National Society, The Interchange. If you require a printed copy of this information, please send your address and a check for \$2.00 made out to PRRT&HS to: Richard C. Price, 779 Irvin Hill Road, McVeytown, PA 17051.

**JOIN THE SOCIETY, MAKE DONATIONS, BUY BOOKS
AND PAST ISSUES OF *THE KEYSTONE*
AT OUR e-STORE
Visit us and shop at
http://www.prrths.com/estore/index_estore.html**

CHAPTER MEETINGS

Support your local chapter - become a member.

ARIZONA CHAPTER

Contact: Sec/Treas. Phil Anderson 480-756-4359 ma393@aol.com

MEETINGS

TBA

LINES WEST – BUCKEYE REGION CHAPTER

Contact: Al Doddroe at: adoddroe@earthlink.net

MEETINGS

TBA

CHICAGO TERMINAL CHAPTER

Contact: President Marv Caldwell at: ld_mlc43@comcast.net

MEETINGS

TBA

GRAND RAPIDS & INDIANA

Contact Jim Winslow at: G5s472@aol.com

MEETINGS

TBA

MIDDLE DIVISION

Contact Rich Ader at: richie0745@yahoo.com

MEETINGS

TBA

NEW ENGLAND

Contact, Tim Garner at: t.a.garner@verizon.net or write to New England Chapter PRRT&HS, c/o Tim Garner, Secretary, PO Box 624, Marlborough, MA 01752-0624

MEETINGS

Saturday, September 19, 2015 – Autumn Chapter Meeting

North Shore Model Railroad Club, Wakefield, Mass.

Hosted by our Vice President Andy Miller, this operating session will give us a chance to run a variety of PRR equipment on the club's sizeable HO layout. We'll arrive between 11:00 and noon at the club to drop off equipment, move upstairs to Brothers Restaurant for lunch and our business meeting at noon, then return to the layout for the operating session for the rest of the afternoon. Layout can run DCC and DC. Members running DCC equipment should de-consist their locomotives before running them on the layout. For directions to the club, visit www.nsmrc.org.

Saturday, December 5, 2014 – Winter Chapter Meeting

New England Model Train Expo, Marlborough, Mass.

This annual event grows bigger every year. There will be over 230 dealer tables, manufacturer displays, operating layouts, and more. Two-day admission is \$10.00. Save \$1.00 in advance. We will meet at noon Saturday up the hill from the exhibit hall at the All Star Bar and Grill at the Royal Plaza Hotel. The show runs December 5 from 10 to 5 and Sunday December 6 from 10 to 4. For more information about the show and to purchase advance tickets, visit www.hubdiv.org.

NORTHERN CENTRAL CHAPTER

Contact President Jerry Britton at: jerry@pennsyrr.com

Chapter web site: <http://ncchapter.pennsyrr.com>

MEETINGS

Sunday, September 13, 2015, 1:30 p.m.

Program to be announced.

Sunday, November 8, 2015, 1:30 p.m.

Program to be announced. Annual election of officers

PENN-TEXAS CHAPTER

Contact Secretary Walt Van Arsdale at: varsdale@verizon.net

MEETINGS

TBA

PHILADELPHIA CHAPTER

Contact: President Steve Staffieri at: interceptor92@verizon.net

Philadelphia Chapter website is: <http://www.philaprrths.com>

MEETINGS

June 27, 2015

Chapter members will be meeting at the Railroad Museum of Pennsylvania: 11am on June 27, 2015. Following the business meeting, museum representatives will report the status of various projects and happenings. The afternoon hours may be spent touring the the museum and surrounding attractions with fellow members.

Be advised this date is also the date for Thomas the Tank Engine at the Strasburg Railroad. Please plan to arrive early

PITTSBURGH CHAPTER

Contact: Newsletter Editor Don Coulter 412-372-4221 donald.coulter3@verizon.net

MEETINGS

TBA

WASHINGTON DC CHAPTER

Contact: Paul Schulz at: paulschulz@verizon.net

MEETINGS

TBA

WEBSITE www.prrths.com



SOCIETY SERVICES

See our website http://www.prrths.com/newpr_r_files/newPRRSocietyServices.htm

To unsubscribe click on line below and send.

<<mailto:keystone-e-news-request@lists.keystone-pubs.org?Subject=unsubscribe>>

To subscribe click on line below and send.

<<mailto:keystone-e-news-request@lists.keystone-pubs.org?Subject=subscribe>>

Ed Swain Editor *The Keystone e-NEWS*
Please respond to: edwardswain@aol.com

