

Number 169

November 2014

A monthly electronic official newsletter of the PRRT&HS published for the purpose of disseminating information on current issues and events pertaining to the Society's and Chapter's operations and administration as well as other information of interest about the PRR.

Editor – Ed Swain

Please send comments and corrections to the Editor at: edwardswain@aol.com

Copyright PRRT&HS – 2014 – All Rights Reserved. May be reproduced for distribution.

Not for sale.

IN THIS ISSUE

- MEMBERSHIP
- SOCIETY WEBSITE STATUS
- E6s RESTORATION STATUS
- SHOP AT OUR E-STORE
- CHAPTER MEETINGS

MEMBERSHIP

As of November 11, 2014, the PRRT&HS membership for 2014 is as follows:

Regular	2,247
Sustaining	335
Contributing	69
International	30
Keystone	112
Total	2,793

Non-renewals: 230 Renewal Rate: $2,668/2,898=92.1$

The number of new members for 2014 is 125.

Brady McGuire, our Membership Expediter, has completed his 2014 non-renewal letter writing efforts with the following results:

This year we gained 89 Renewals from 293 letters written, 30.1%. This compares with 64 renewals, 25.4% last year, 81 renewals, 28.7% in 2012 and 38 renewals, 18.2% in 2011.

Summation:

Letters written and mailed	293	
Total responses	116	39.6%
RENEWALS	89	30.1%
Potential renewals (note)	2	.6%
Deceased	11	3.7%
NOT Renewing:		
economics	5	1.7%
lost interest	6	2%
health issues	3	1%
dissatisfied with the Keystone	0	0
Returned no forwarding address	0	0

(note) non-renewals who told me they would renew but haven't yet.

Thanks to Brady for his great efforts!

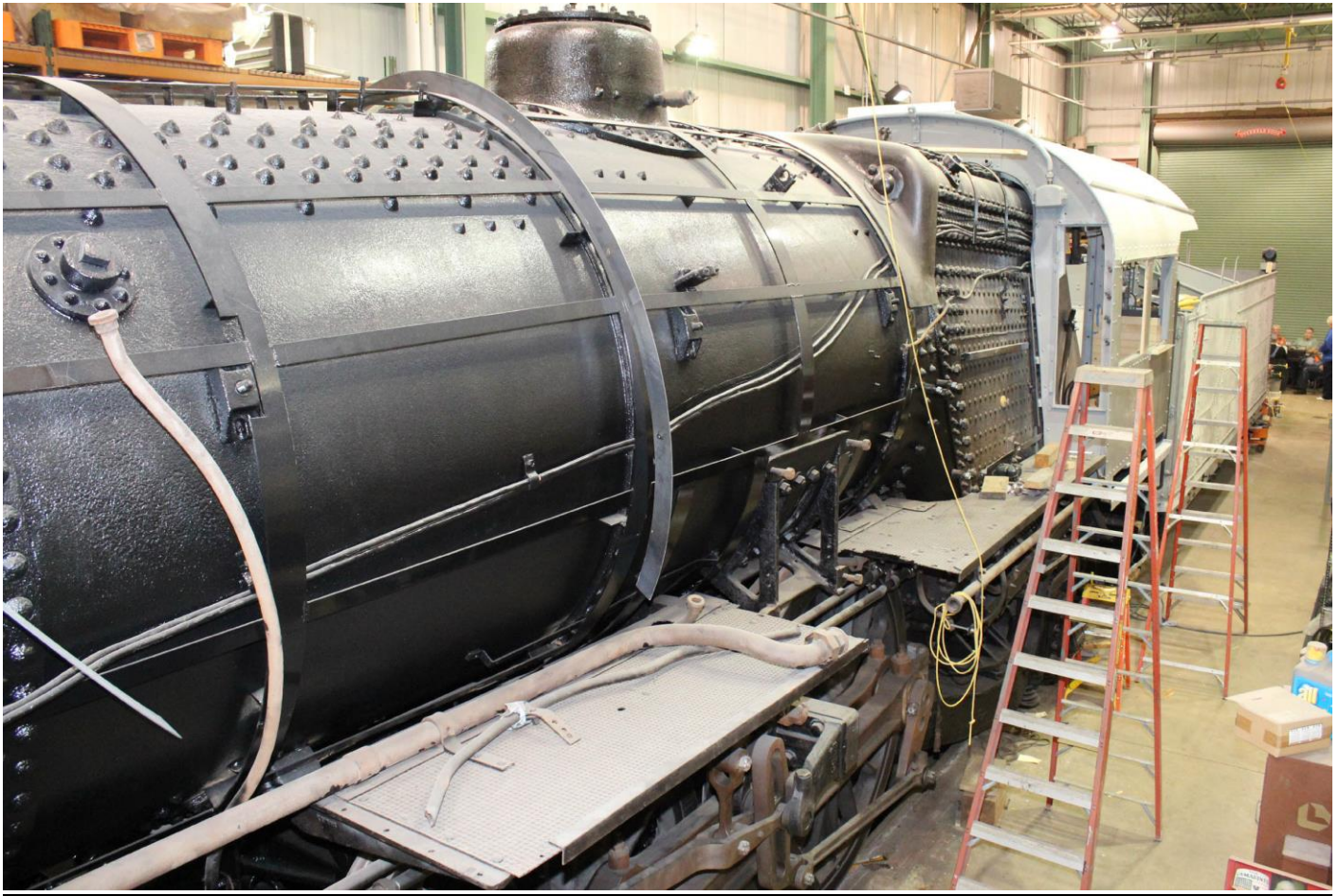
SOCIETY WEBSITE STATUS

The web site is back up and running and the Google warning has been withdrawn.

E6s RESTORATION STATUS

These photos show the status of the restoration efforts at the Railroad Museum of Pennsylvania. The photos are from the collection of Bill Lane and published with his permission. Doug Kisala passed them along to me. Thanks to both Doug and Bill for sharing these with us.





SOCIETY ON FACEBOOK

The Society has been on *Facebook* since June 2010, we post interesting tidbits there from time to time. Check it out: <http://www.facebook.com/pages/The-Pennsylvania-Railroad-Technical-Historical-Society/136126329733054>

SOCIETY MEMBERSHIP

The purpose of the Pennsylvania Railroad Technical & Historical Society is to bring together persons interested in the history and modeling of the Pennsylvania Railroad, its subsidiaries and its predecessor companies. Our goals are to promote the preservation and recording of all information regarding the organization, operation, facilities and equipment of the PRR.

The Society's quarterly illustrated journal, *The Keystone*, has been published continuously since 1968. Each issue of 84 or more pages contains illustrated original authoritative articles, about locomotives, cars, other equipment, facilities and operating practices of the PRR. The Society also publishes its own thoroughly researched books and other materials concerning Pennsy history. *The Keystone Modeler* is also a quarterly special 30-plus page online publication of the Society. These publications are for sale on our website.

The Society meets annually, usually during the first weekend in May, providing an opportunity for its members to get together and learn more about the PRR. Local chapters around the country also provide members and guests with regular meetings that feature PRR related programs, see listing below for chapter events. The 2015 Annual National Meeting will take place between April 30 and May 3, in State College hosted by the Middle Division. We hope to see you there.

Information about our Society may be found on our website <http://www.prrths.com>. To join the Society you may use the e-Store http://www.prrths.com/estore/index_estore.html#membership or send \$35.00 to: PRRT&HS, PO

Box 54, Bryn Mawr, PA 19010-0054. All memberships are for a calendar year, renewals after February 15th are \$40.00. The additional late dues fee pays to ship any Keystones that missed the normal mailing.

Drawings from Microfilm

Copies of PRR equipment drawings are available from the Society's microfilm collection. To order drawings, you must know the drawing number and title. Ordering information and lists of arrangement drawings are available on the Society's website, www.prrths.com, under National Society, The Interchange. If you require a printed copy of this information, please send your address and a check for \$2.00 made out to PRRT&HS to: Richard C. Price, 779 Irvin Hill Road, McVeytown, PA 17051.

**JOIN THE SOCIETY, MAKE DONATIONS, BUY BOOKS
AND PAST ISSUES OF *THE KEYSTONE*
AT OUR e-STORE
Visit us and shop at
http://www.prrths.com/estore/index_estore.html**

CHAPTER MEETINGS

Support your local chapter - become a member.

ARIZONA CHAPTER

Contact: Sec/Treas. Phil Anderson 480-756-4359 ma393@aol.com

MEETINGS

TBA

LINES WEST – BUCKEYE REGION CHAPTER

Contact: Al Doddroe at: adoddroe@earthlink.net

MEETINGS

TBA

CAMDEN & AMBOY CHAPTER

Contact John Kilbride JKTRR@msn.com

Website: www.trainweb.org/camdenandamboyyrrhistoricalgroup

MEETINGS

TBA

CHICAGO TERMINAL CHAPTER

Contact: President Marv Caldwell at: ld_mlc43@comcast.net

MEETINGS

TBA

GRAND RAPIDS & INDIANA

Contact Jim Winslow at: G5s472@aol.com

MEETINGS

TBA

MIDDLE DIVISION

Contact Rich Ader at: richie0745@yahoo.com

MEETINGS

TBA

NEW ENGLAND

Contact, Tim Garner at: t.a.garner@verizon.net or write to New England Chapter PRRT&HS, c/o Tim Garner, Secretary, PO Box 624, Marlborough, MA 01752-0624

MEETINGS

Saturday, December 6, 2014

New England Model Train Expo, Marlborough, Mass.

This annual event grows bigger every year. There will be over 230 dealer tables, manufacturer displays, operating layouts, and more. Two-day admission is \$8.00. Save \$1.00 in advance. We will meet at noon Saturday up the hill from the exhibit hall at the All Star Bar and Grill at the Royal Plaza Hotel. The show runs December 6 from 10 to 5 and Sunday December 7 from 10 to 4. For more information about the show and to purchase advance tickets, visit www.hubdiv.org.

NORTHERN CENTRAL CHAPTER

Contact President Jerry Britton at: jerry@pennsyr.com

MEETINGS

TBA

PENN-TEXAS CHAPTER

Contact Secretary Walt Van Arsdale at: varsdale@verizon.net

MEETINGS

The 2014 Annual Meeting will be November 22nd in Galveston, Texas. The meeting will start at 1:30 P.M. at the Galveston Model Railroad Club.

PHILADELPHIA CHAPTER

Contact: President Steve Staffieri at: interceptor92@verizon.net

Philadelphia Chapter website is: <http://www.philaprrths.com>

MEETINGS

Meetings are scheduled for December 6, February 7, and April 11

PITTSBURGH CHAPTER

Contact: Newsletter Editor Don Coulter 412-372-4221 donald.coulter3@verizon.net

MEETINGS

TBA

WASHINGTON DC CHAPTER

Contact: Paul Schulz at: paulschulz@verizon.net

MEETINGS

TBA

WEBSITE www.prrths.com



SOCIETY SERVICES

See our website http://www.prrths.com/newpr_r_files/newPRRSocietyServices.htm

To unsubscribe click on line below and send.

<<mailto:keystone-e-news-request@lists.keystone-pubs.org?Subject=unsubscribe>>

To subscribe click on line below and send.

<<mailto:keystone-e-news-request@lists.keystone-pubs.org?Subject=subscribe>>

Ed Swain Editor *The Keystone e-NEWS*
Please respond to: edwardswain@aol.com

